



TAYLOR'S
UNIVERSITY

Wisdom • Integrity • Excellence

E-PORTFOLIO

INTERIOR ARCHITECTURE DESIGN IV

ASHLEY TEW LI WEN | 0343533 | AUGUST 2022

BACHELOR OF ARTS (HONS) IN INTERIOR ARCHITECTURE

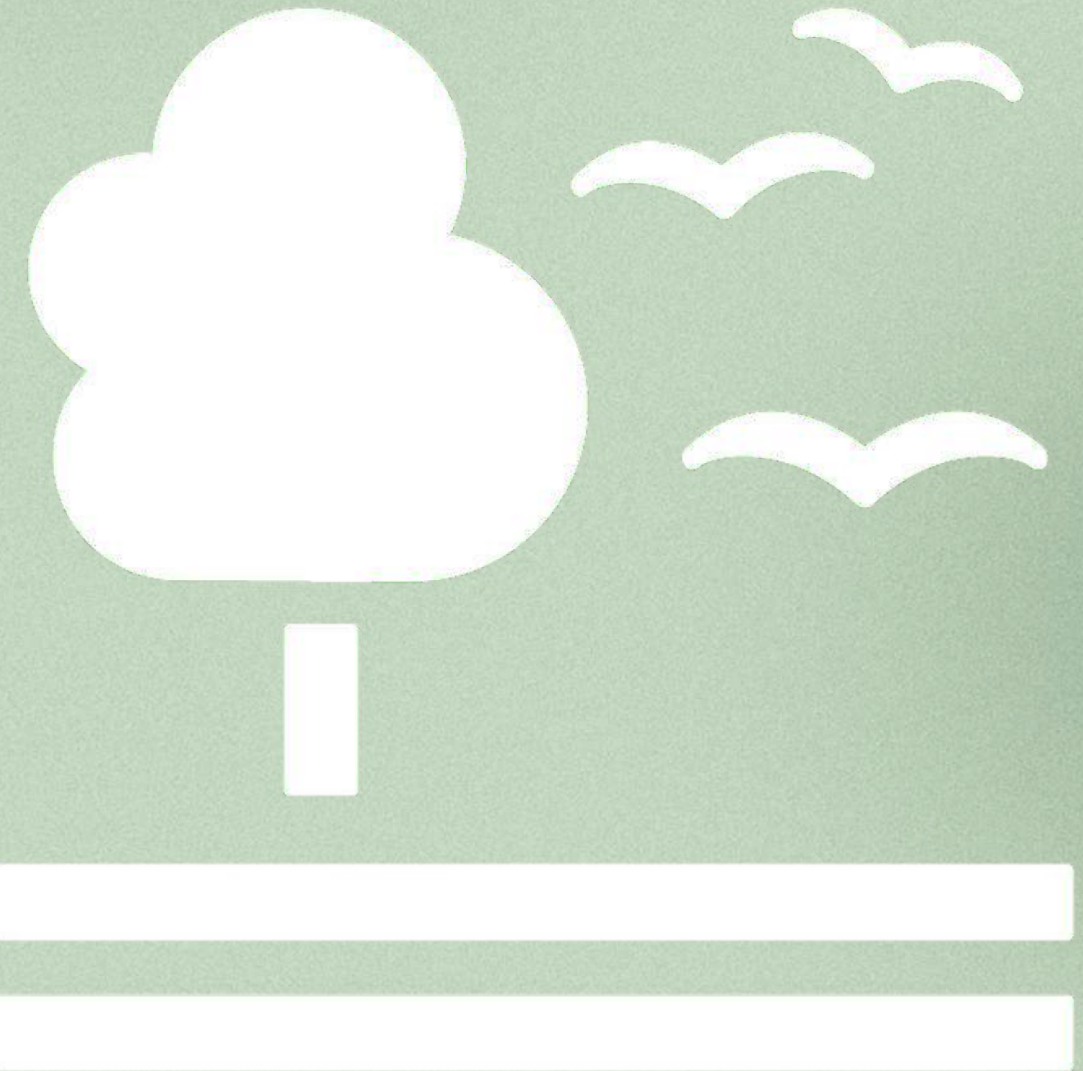
PHASE 01

Narrative Programming

We must identify the Sustainable Development Goals (SDG) cluster in this phase, develop concept ideas that represent the problem as an allegory, and interpret the research into a narrative representation later on to investigate, characterise, create the necessary areas, and transition to a functional programming methodology. In order to offer a collection of results and research that will be used in the overall design approach, we are required to build both narrative and programming boards.

We must conduct research on the selected SDG as a group of three people and create an infographic diagram to further explain the topic. With that, we need to find a solution and adapt it into our own design concept by creating a tangible product that effectively conveys the narrative.

15 LIFE ON LAND





Narrative Board



Programming Board

GENEBANK

TARGET GROUP



Seed enthusiast
& preserver

Bioseed is a interactive machine that connects people and seedlings with technology. This machinery consist of mini seed vaults together with its own packaging system as any individuals are welcome to chose their own preferred seed samples to be taken home for personal research or breeding that benefits the agricultural biodiversity.

CLIENT

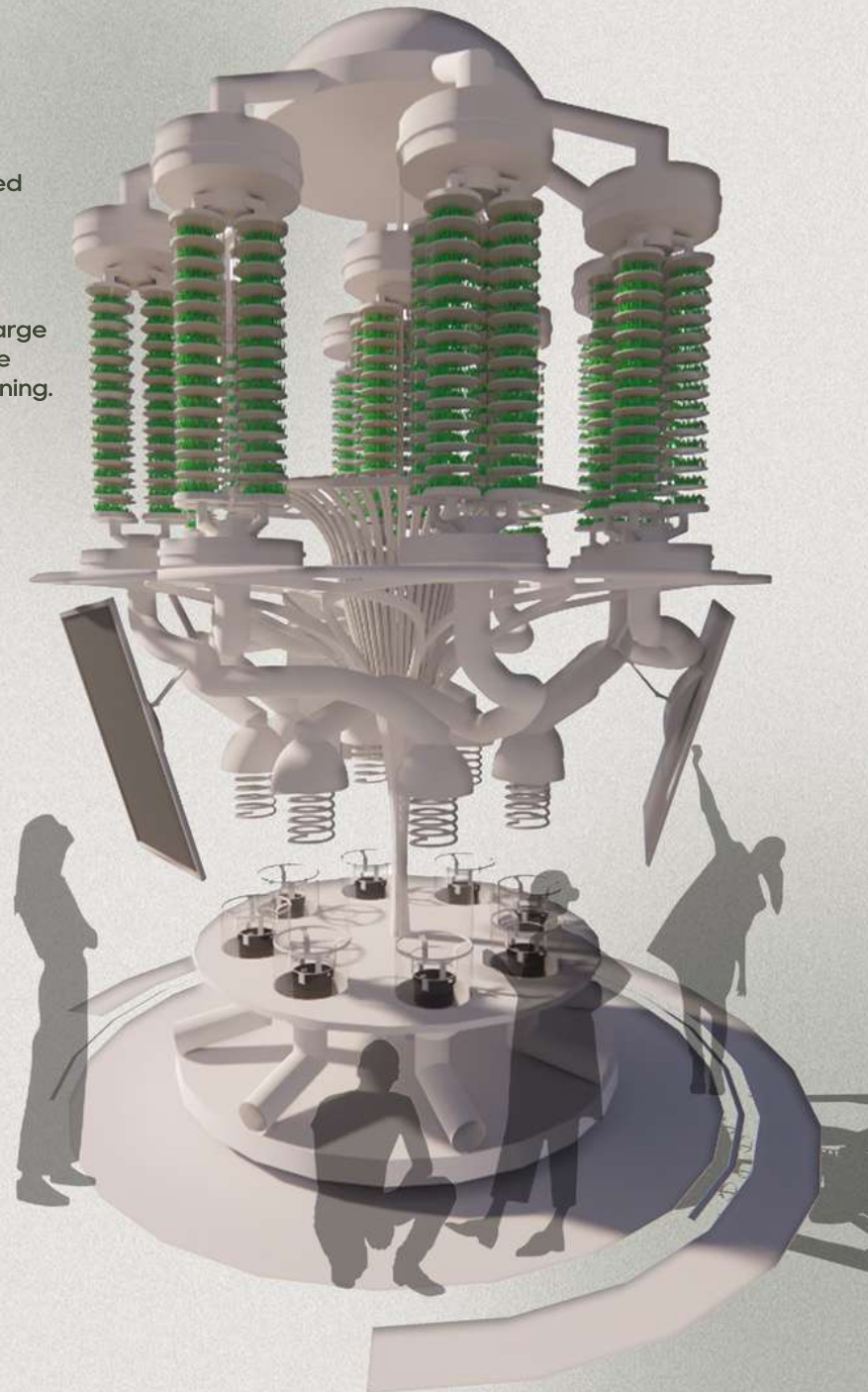
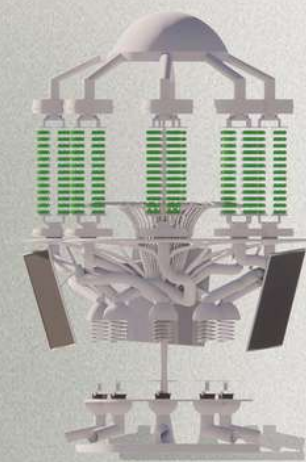


CIAT is a CGIAR research center focused on promoting agrobiodiversity and sustainable agroecosystems internationally. CIAT conducts crop research with its extensive genebank, also provides seed samples free of charge to any individual or organization for the purposes of research, breeding, or training.

PLAN VIEW



FRONT ELEVATION



GENEBANK

THE DOME

The dome is a giant air conditioner that generates cool air, flowa from the pipes straight into the seed banks to maintain the quality of the seeds.



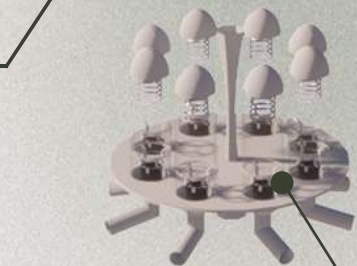
SEED BANK

Rotates in a group of 4, each pod is air conditioned. Pipes are attached beneath to transport seeds to the packaging station below after selection.



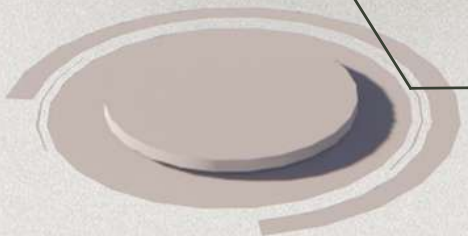
FLOWER STRUCTURE

Acts as a support to hold the seed banks above and also the seed selection monitors.

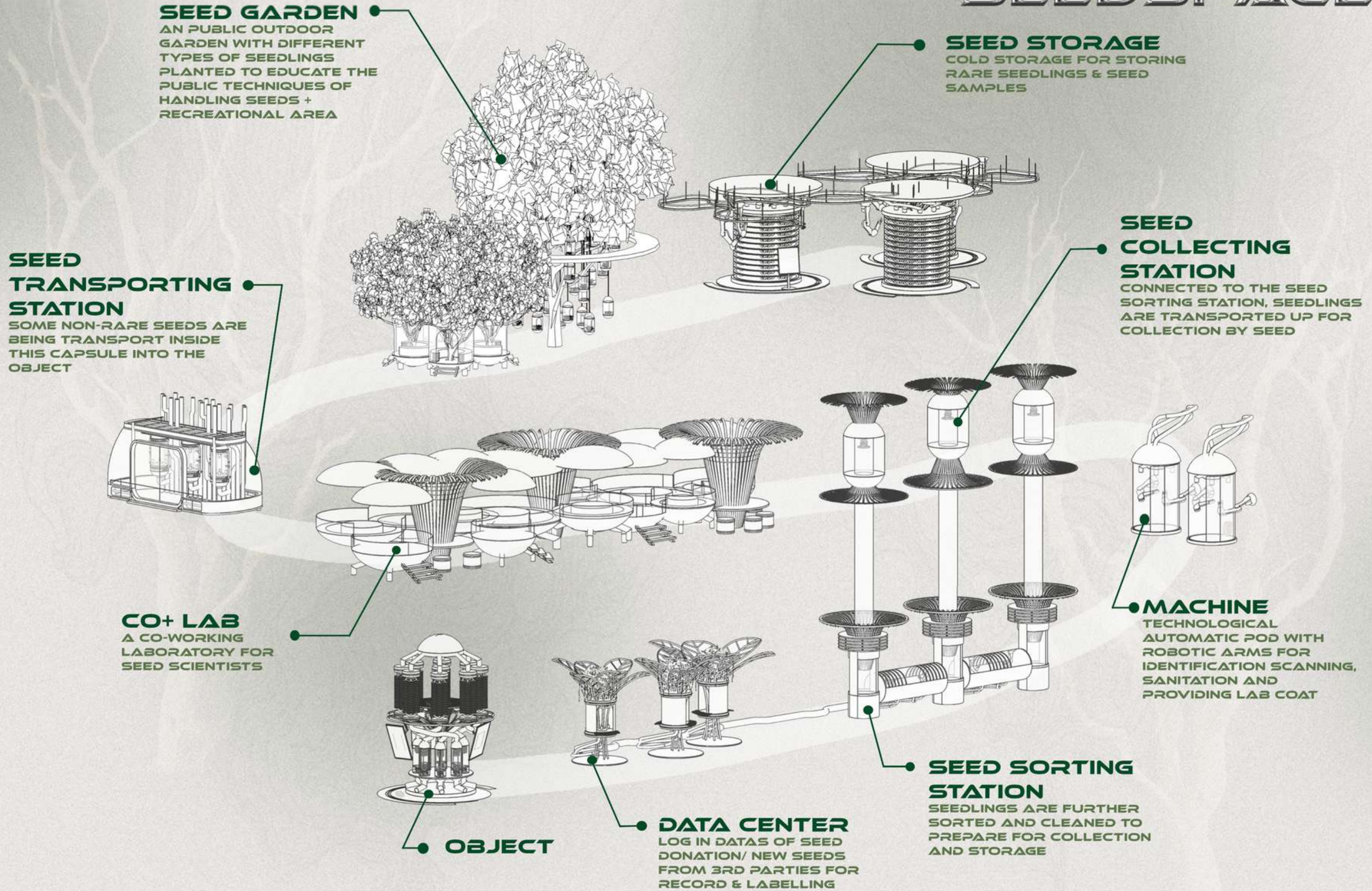


PACKAGING STATION

Seeds from the seed bank are directly transported into the packaging pods. There are automatic mechanism within to pack the selected seeds which then drops down into the pipe and out for collection.



SEEDSPACE



PROGRAM DIAGRAM

Program Diagrams

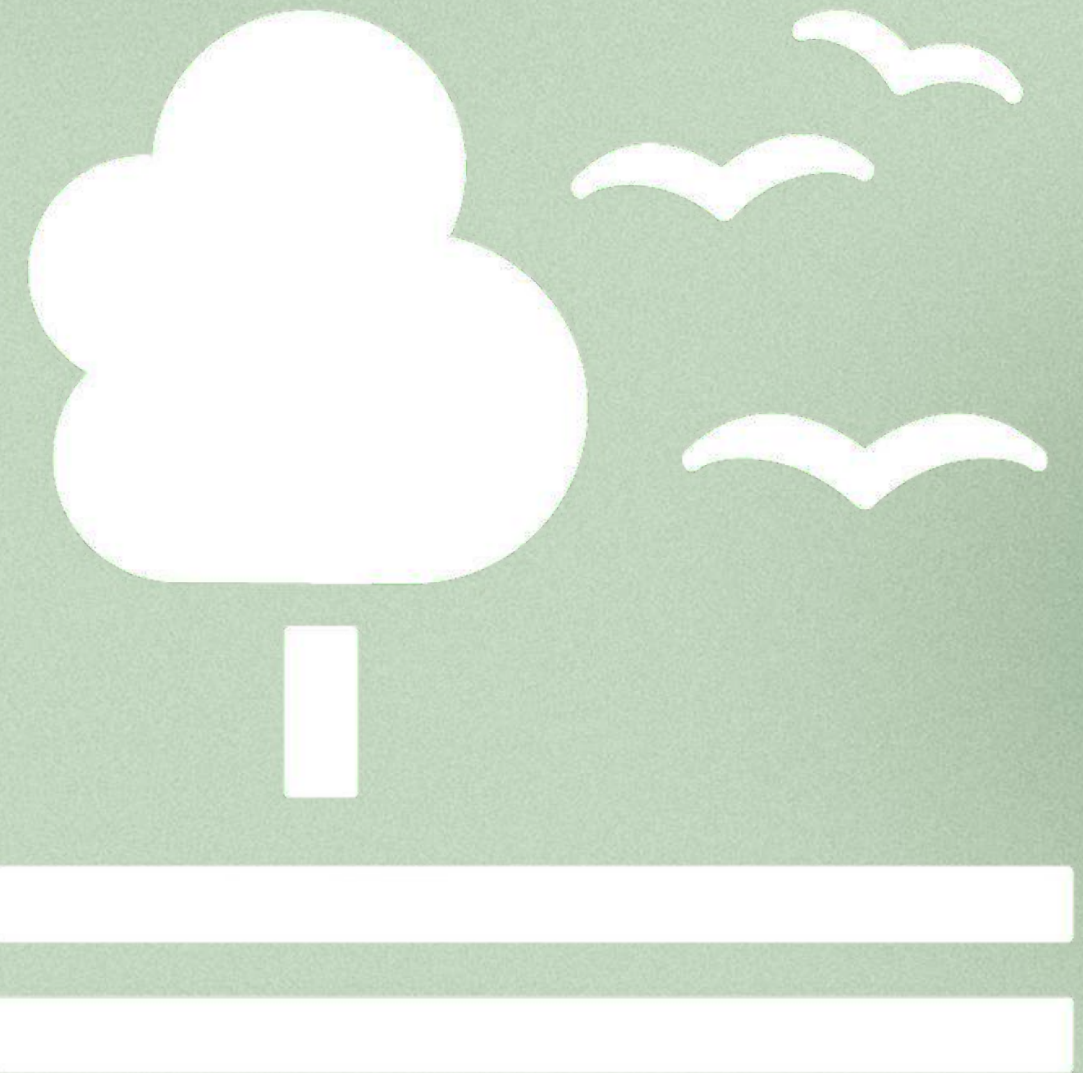
P1 (C) - INDIVIDUAL

PHASE 02

Model

In order to comprehend the interior spaces, we must construct a 1:100 scale model of the chosen location (PAM centre) in groups of three throughout this phase. We will then construct individual models using the chosen floor and the suggested new interior idea and design.

15 LIFE
ON LAND





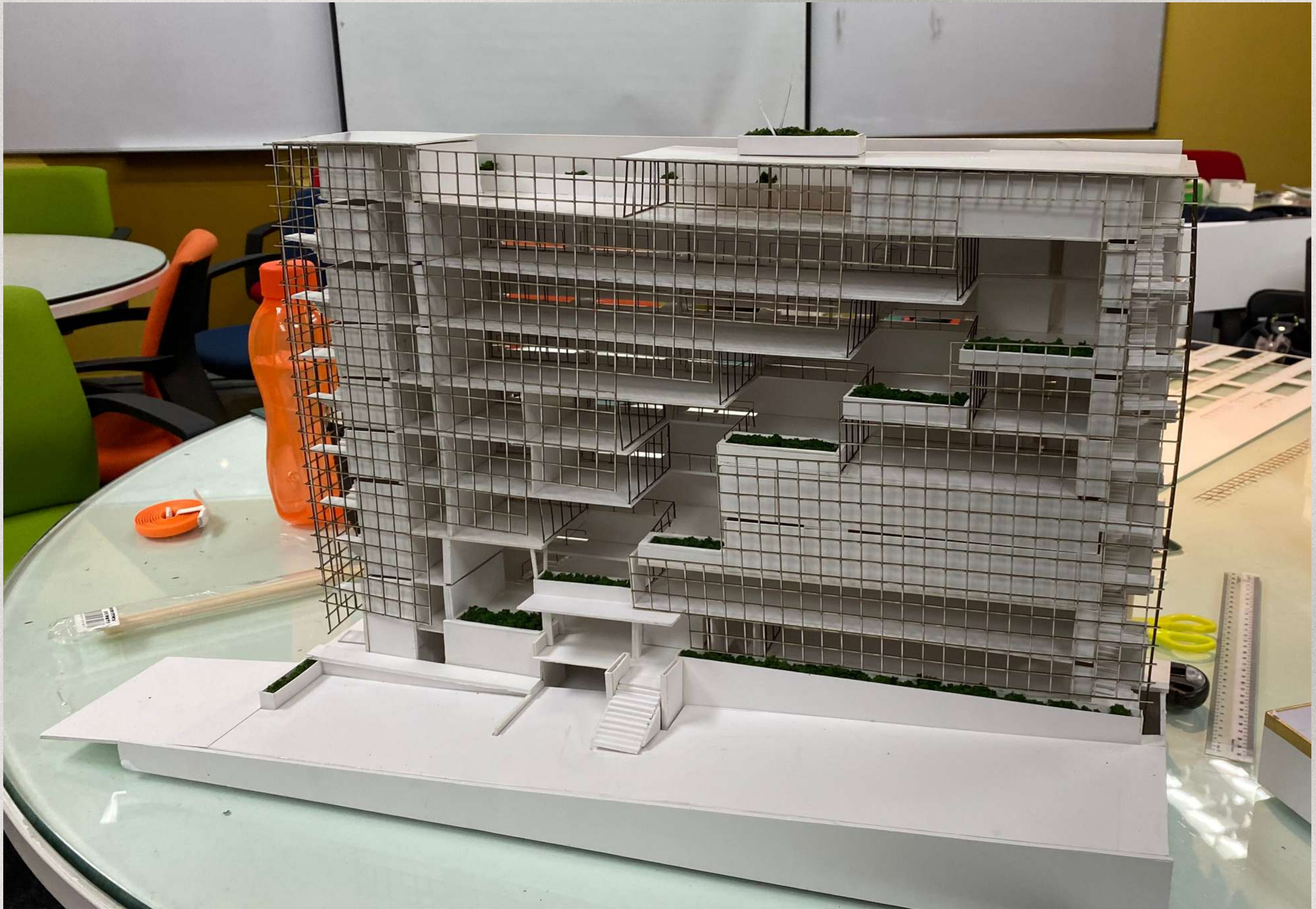
Work-In Progress



Group Photo

P2 (A) - GROUP

P2 (A) - GROUP



Group Model - PAM Centre



Individual Model - Ground Floor (Seedspace)

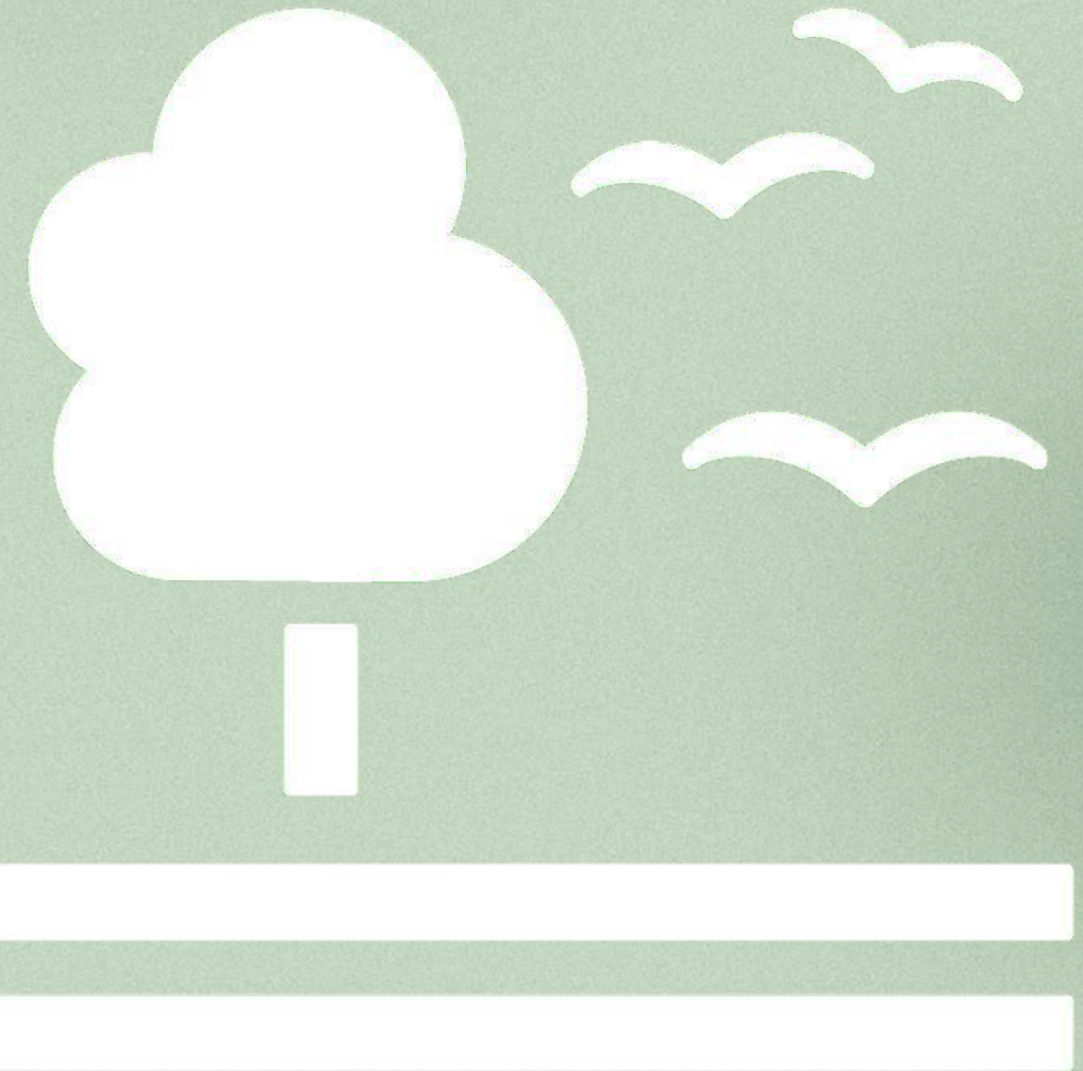
P2 (B) - INDIVIDUAL

PHASE 03

Work+Play

Each of us is expected to design an attractive workstation at the chosen level in line with narrative programming and the focused object produced in Project 1. We need to transform the workplace culture to one that prioritises engagement and productivity if we are to reform and advance. The potential of culture and space for illuminating experiences is also reexamined in a setting that boosts staff engagement and vitality through creative space utilisation. The psychological effects of this flow are profound. With an emphasis on creativity, teamwork, and communication, this centre will be a fun and interesting place to work.

15 LIFE ON LAND



SEEDSPACE

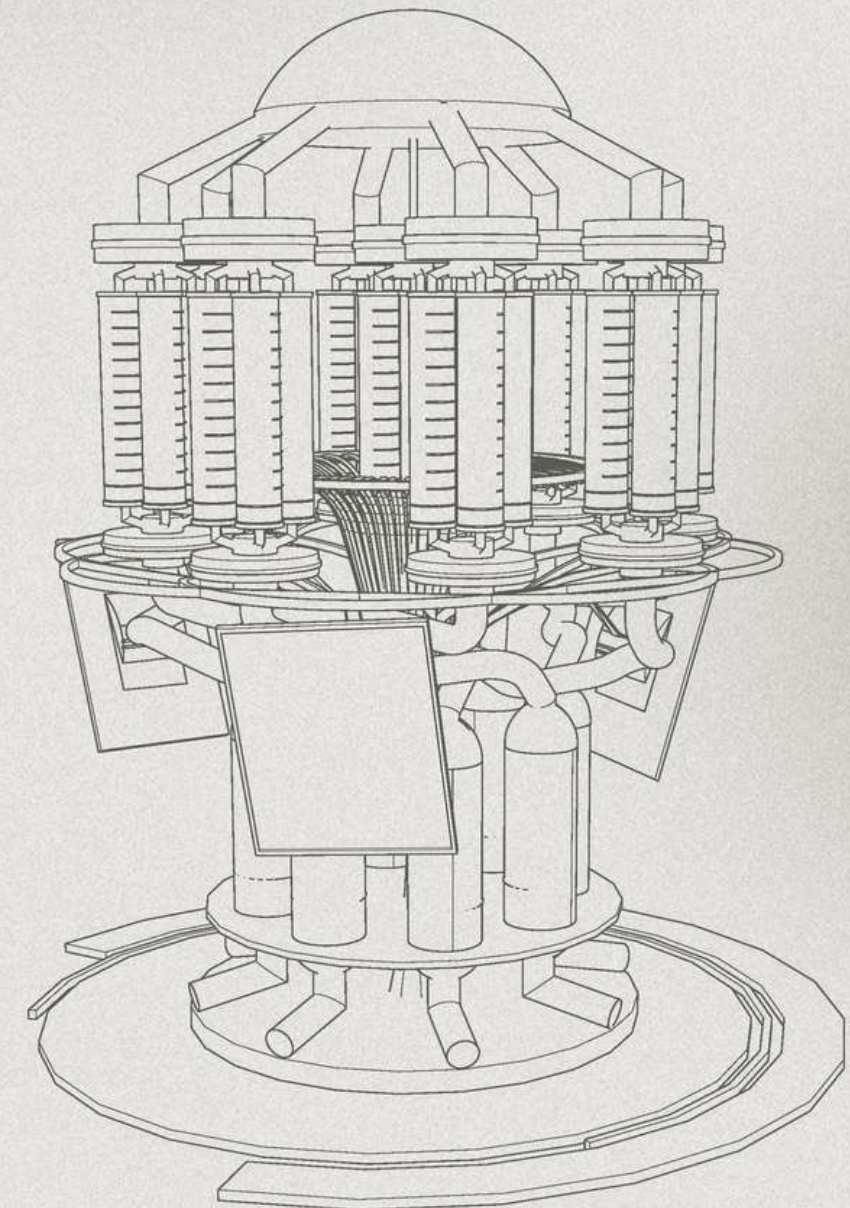
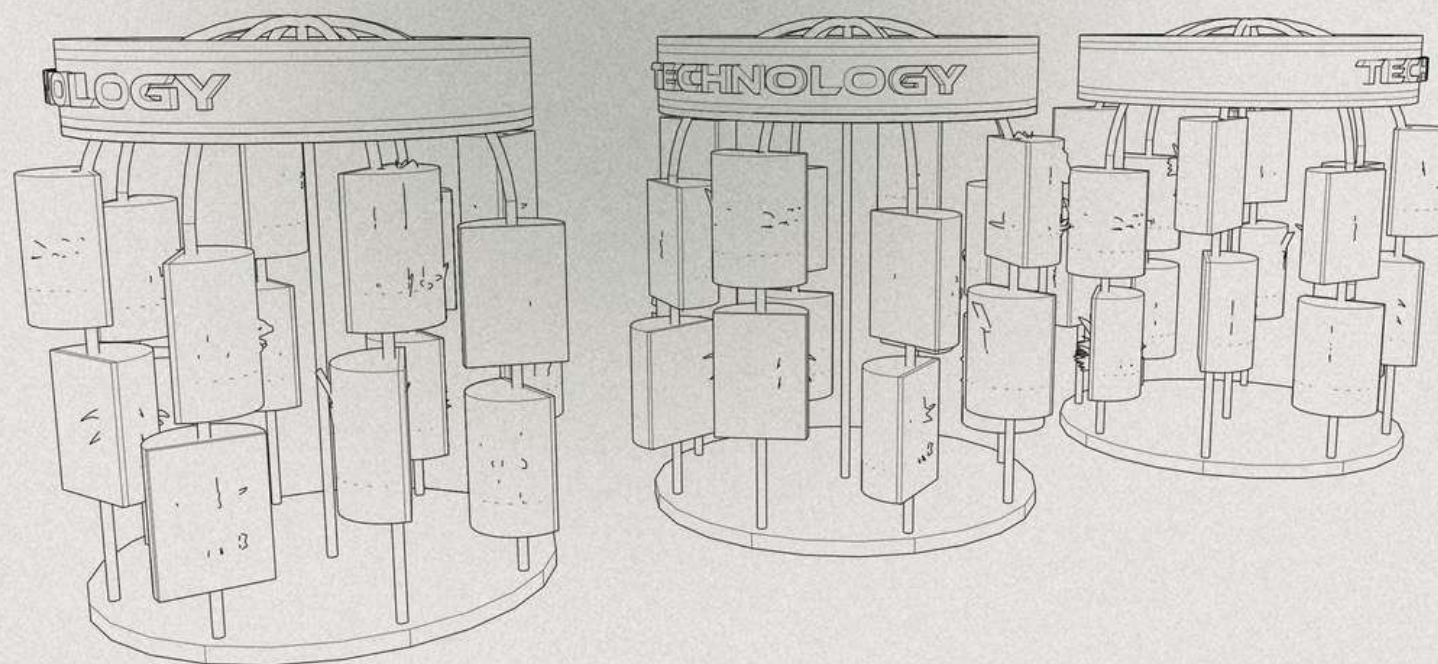
CLIENT



Seedspace is an interactive space that connects people with the cores of nature - seeds. Seedspace is dedicated into maintaining our agricultural biodiversity, research and cultivate as well as providing free seed samples and educational tours to the public to encourage and educate individuals about seed care.

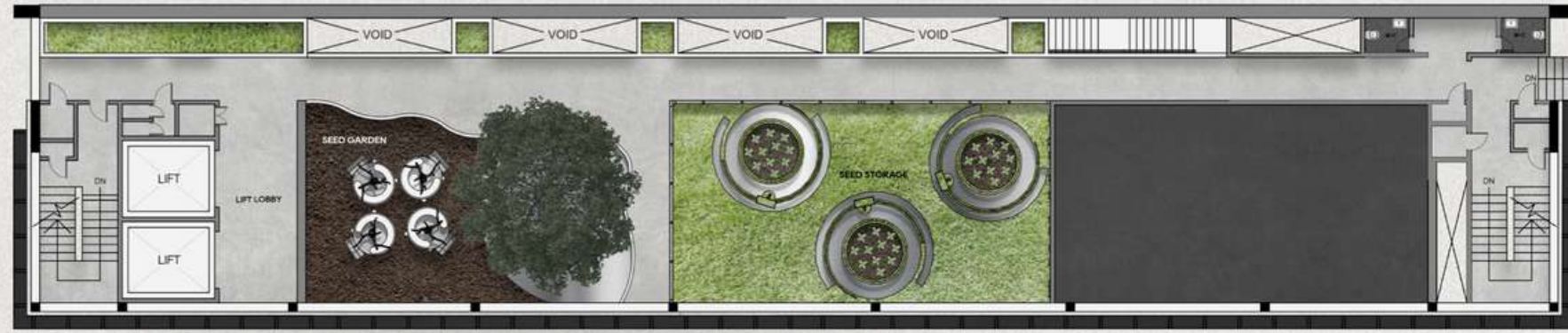
CIAT is a CGIAR research center focused on promoting agrobiodiversity and sustainable agroecosystems internationally. CIAT conducts crop research with its extensive genebank, also provides seed samples free of charge to any individual or organization for the purposes of research, breeding, or training.

The concept touches a blend of technology and nature, which will help in a smoother transition in the cultivation of the public's knowledge about seeds. Most of the machineries are shaped in a pod that has auto sanitation function and providing individual space as a strategic plan against the pandemic.



Design Statement

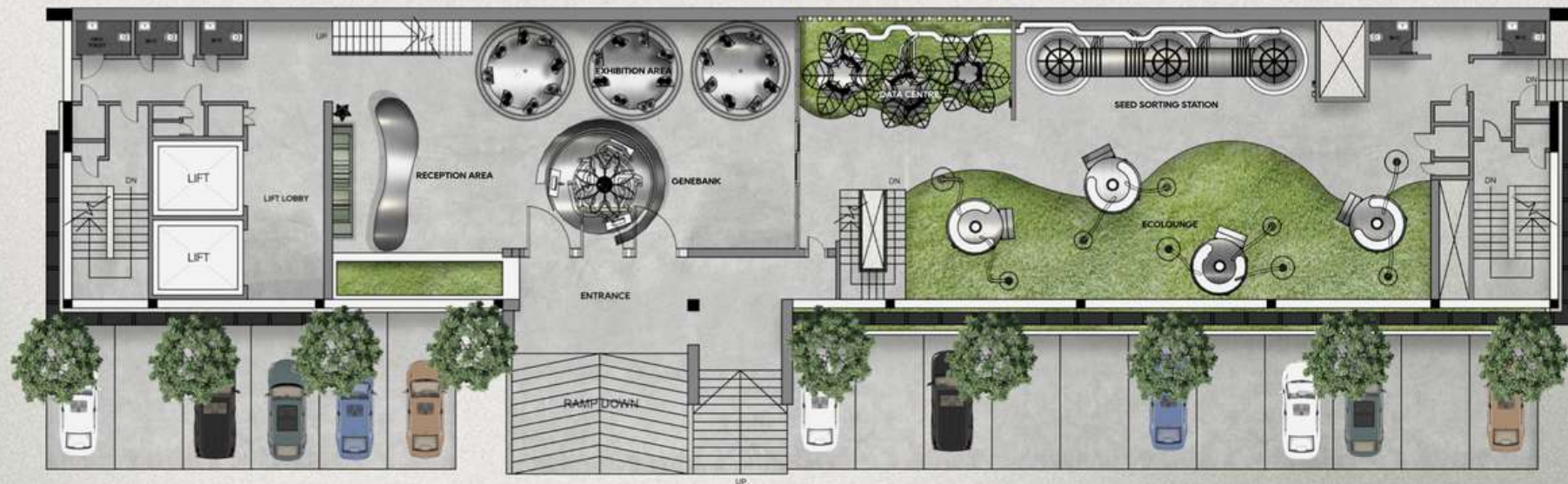
FLOOR PLANS



FLP RT ROOFTOP FURNITURE LAYOUT PLAN
SCALE 1: 100



FLP 1F FIRST FLOOR FURNITURE LAYOUT PLAN
SCALE 1: 100



FLP GF GROUND FLOOR FURNITURE LAYOUT PLAN
SCALE 1: 100

SM1 BUILDING SELECTION
1 POINT IS AWARDED FOR THE SELECTION OF A GBI-CERTIFIED BUILDING

SM5 SUSTAINABLE SPACE DESIGN
- OPEN PLAN LAYOUT >50%
- PROVISION OF A DEDICATED RECREATION
- HOT DESKING 30% OF WORK STATIONS

SM6 INDOOR GREENSCAPE & WATER FEATURE
PROVIDE INDOOR GREENSCAPE WITH NATIVE PLANTS TO >3% OF THE TOTAL INTERIOR FLOOR SPACE

SM12 GREEN PROCUREMENT & OPERATION POLICY
PROCURE &/OR USE MULTI-FUNCTIONAL OFFICE EQUIPMENT &/OR APPLIANCES FOR ENTIRE OFFICE OPERATION

EQ8 ELECTRICAL LIGHTING LEVEL
OFFICE LIGHTING DESIGN MAINTAIN LUMINANCE LEVEL OF NO MORE THAN SPECIFIED IN MS1525 FOR 90% OF INTERIOR SPACE

EQ6 DAYLIGHT
PROVIDE GOOD LEVELS OF DAYLIGHTING FOR BUILDING OCCUPANTS (>50% OF INTERIOR SPACES)

EQ3 THERMAL COMFORT, DESIGN & CONTROLABILITY OF SYSTEMS
PROVIDE COMFORT SYSTEM CONTROLS FOR ALL SHARED SPACES TO ENABLE ADJUSTMENTS TO SUIT ALL

EE3 AIR CONDITIONING SYSTEM
SEPERATE AIR CONDITIONING SYSTEM FOR AREAS WITH DIFFERENT FUNCTIONS AND EQUIPPED WITH DEDICATED CONTROLS

MR2 RECYCLED CONTENT MATERIALS
INCORPORATION OF RECYCLED CONTENT MATERIALS INTO INTERIOR MATERIALS, COMPONENTS & PRODUCT

MR3 REGIONAL MATERIALS
USE LOCAL BUILDING INTERIOR MATERIALS, COMPONENTS & PRODUCTS THAT HAVE BEEN EXTRACTED, HARVESTED, RECOVERED, OR MANUFACTURED WITHIN MALAYSIA



SEC
01

SECTION

SCALE 1: 150

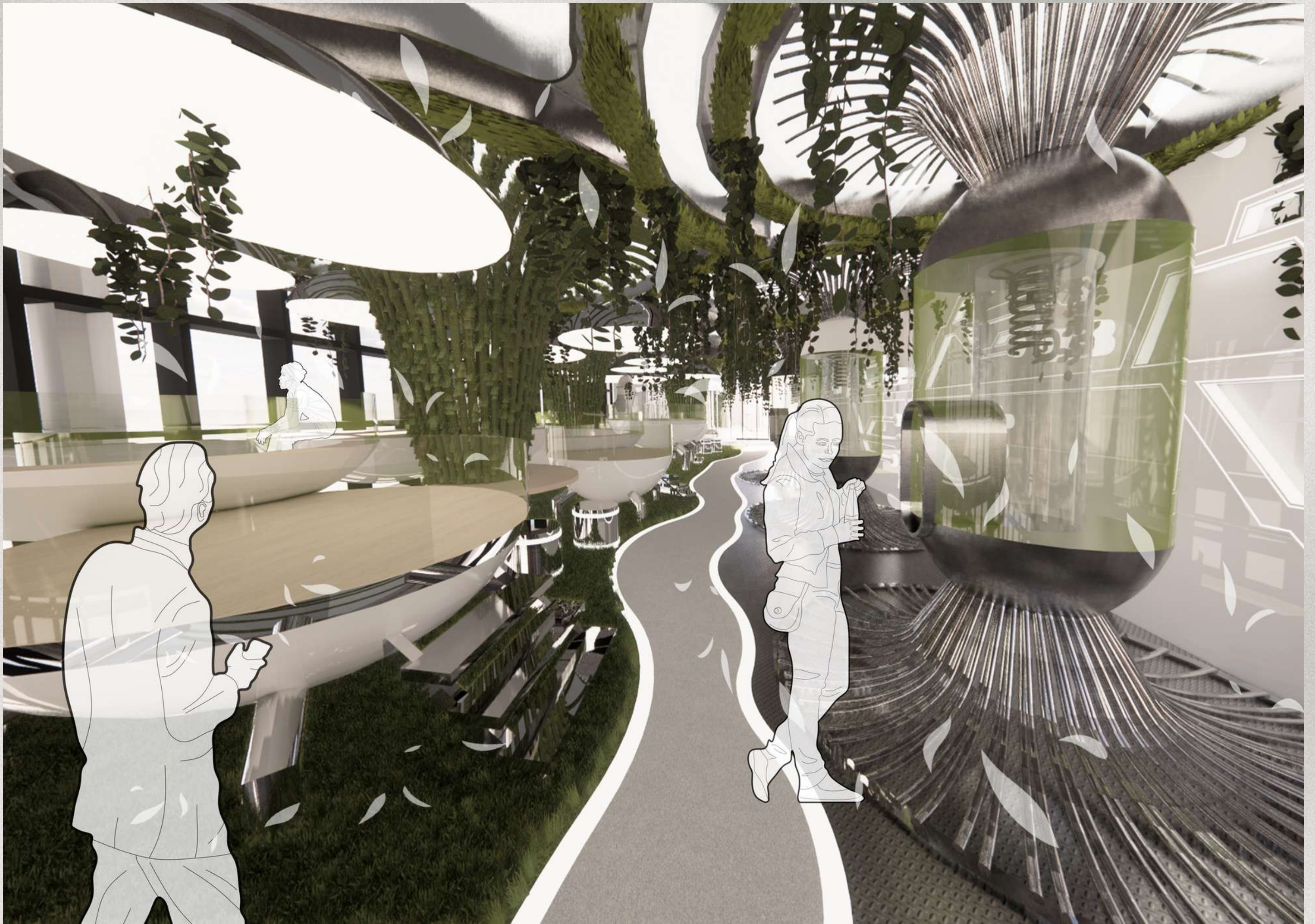
Section



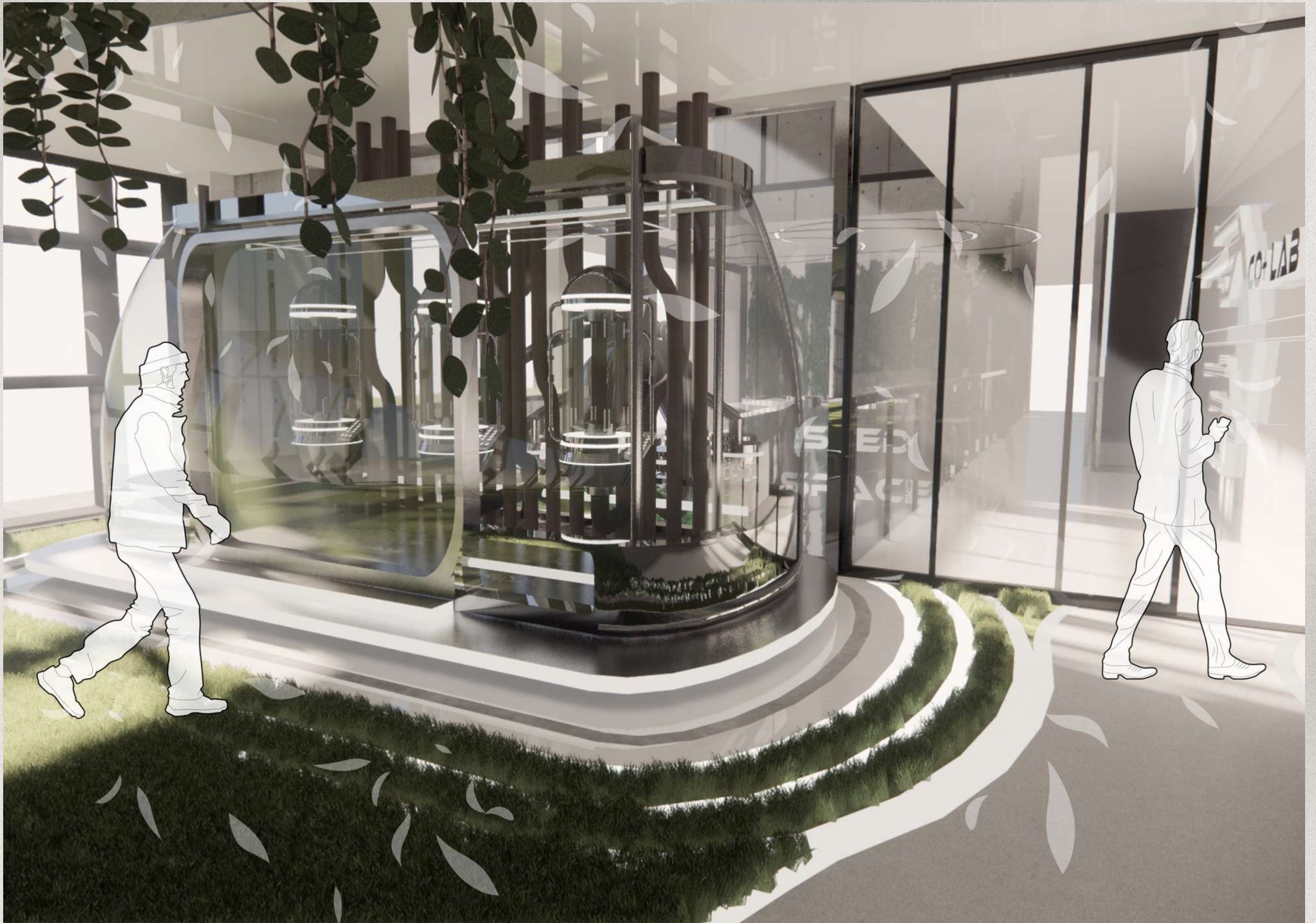
Perspective - Entrance



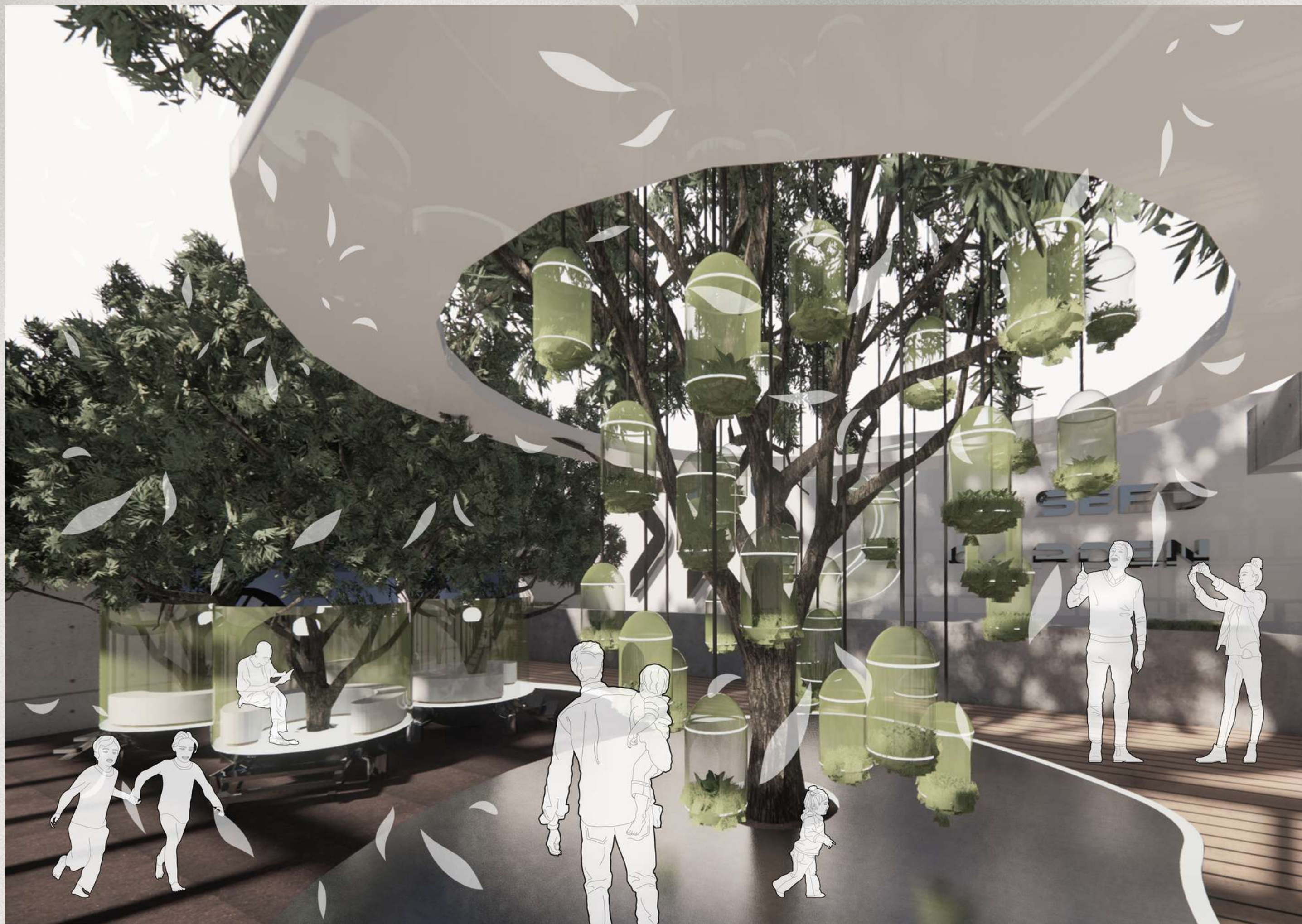
Perspective - Data Centre/Ecolounge



Perspective - Co+ Lab



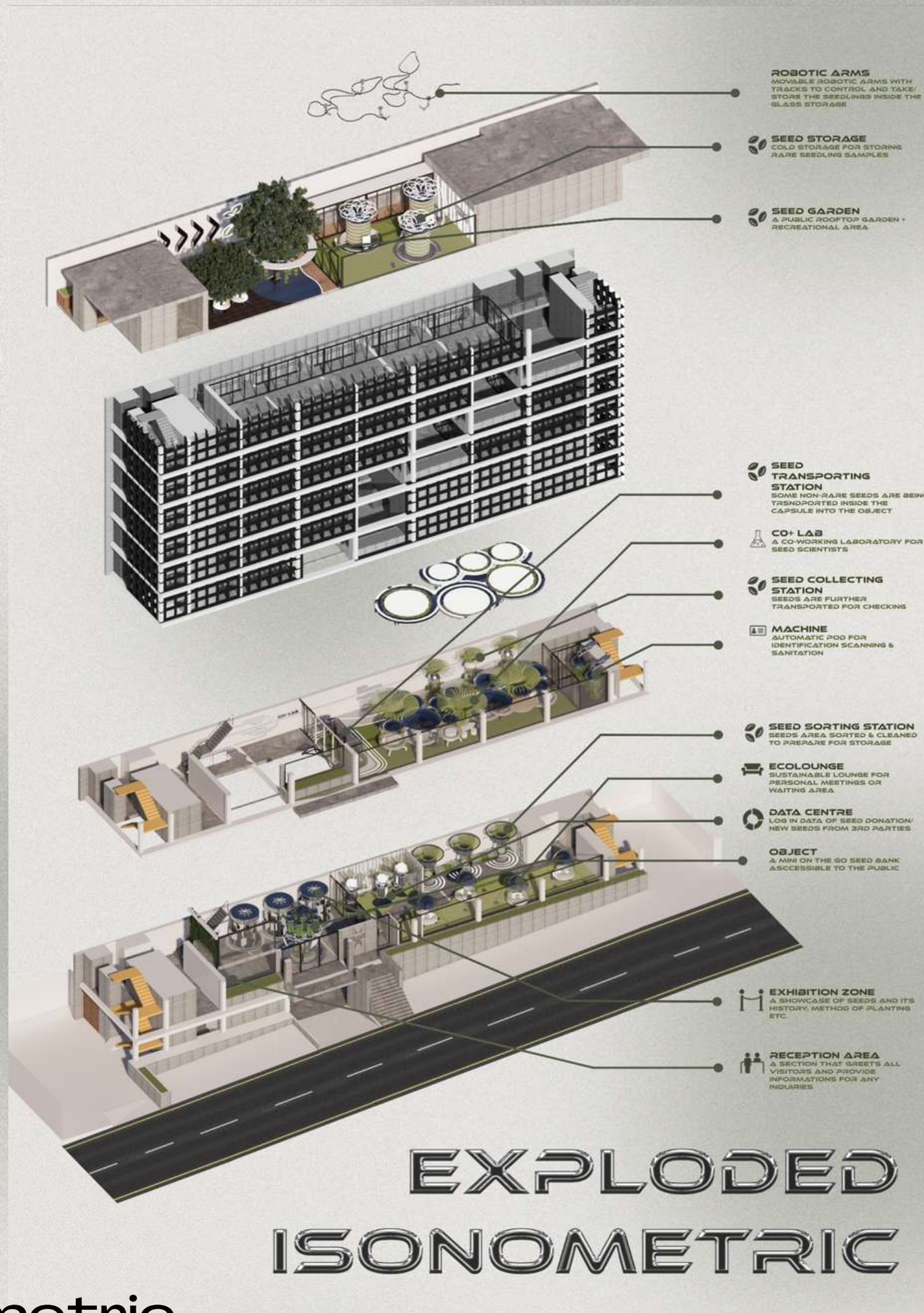
Perspective - Seed Transporting Station



Perspective - Seed Garden



Perspective - Seed Storage



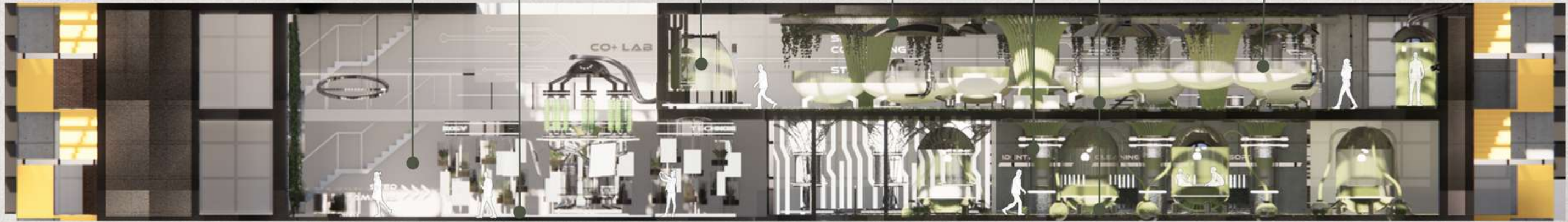
Exploded Isometric

ELEVATIONS



EL 02 ELEVATION 2
SCALE 1: 75

- WHITE PAINT IN GLOSS FINISH
- EXPOSED CONCRETE
- GREEN TINTED TEMPERED GLASS
- CHROME PLATED METAL
- STAINLESS STEEL
- INDOOR GRASS
- LIGHT OAK WOOD



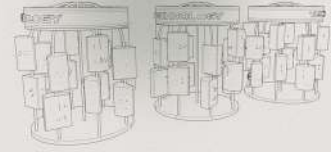
EL 01 ELEVATION 1
SCALE 1: 75

FINAL PRESENTATION

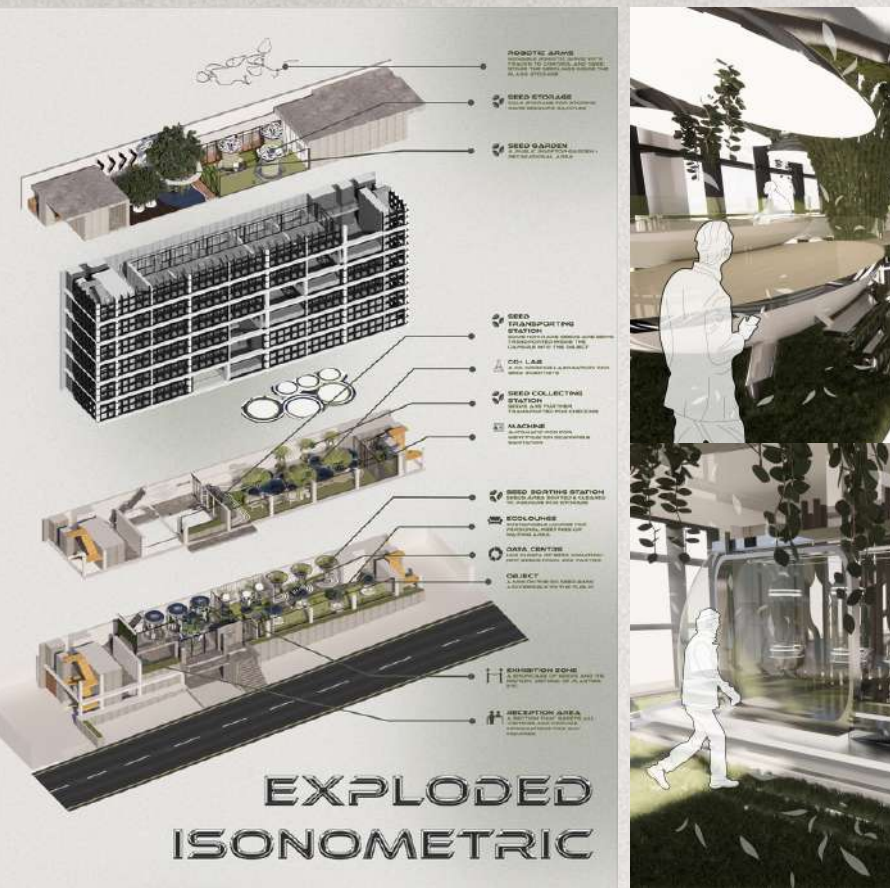
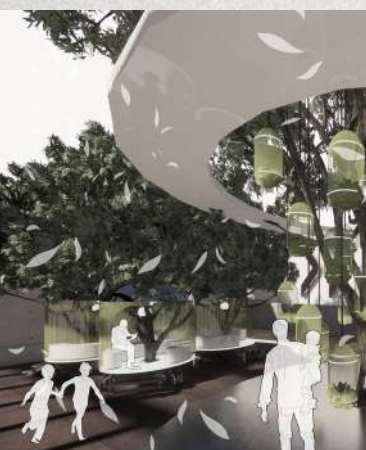
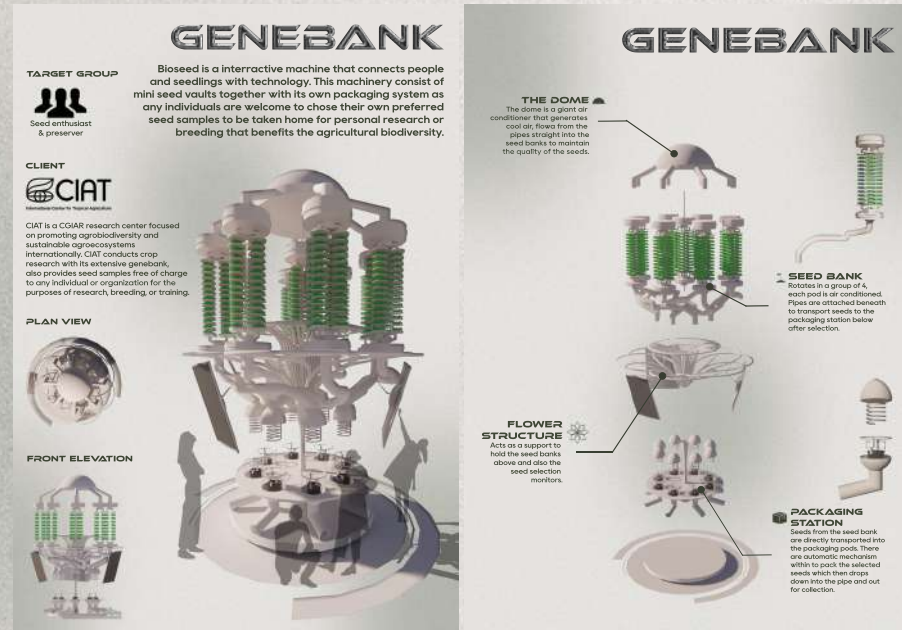
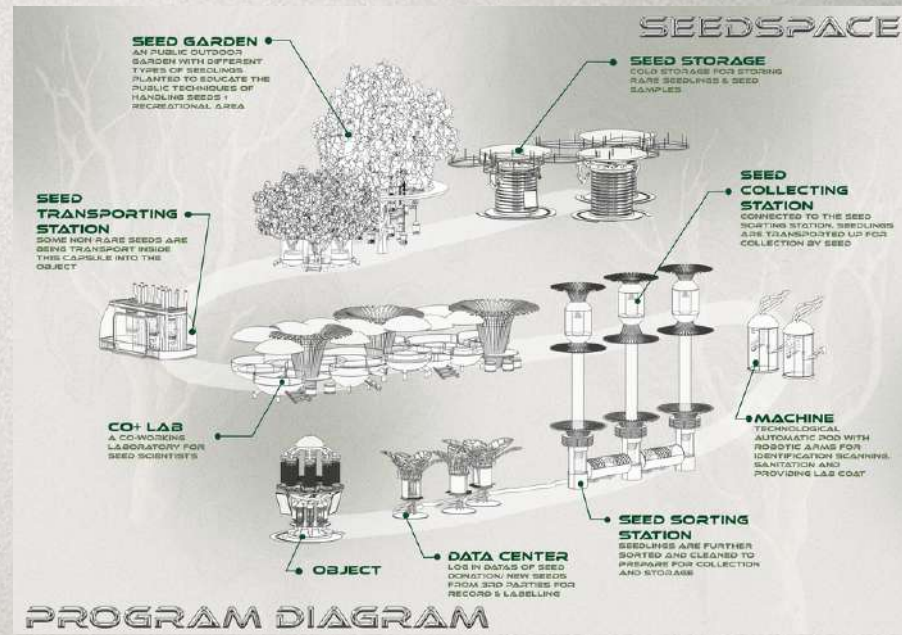
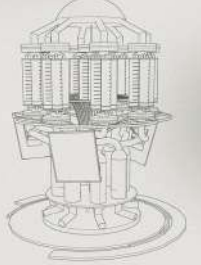
SEEDSPACE

Seedspace is an interactive space that connects people with the cores of nature - seeds. Seedspace is dedicated into maintaining our agricultural biodiversity, research and cultivate as well as providing free seed samples and educational tours to the public to encourage and educate individuals about seed care.

The concept touches a blend of technology and nature, which will help in a smoother transition in the cultivation of the public's knowledge about seeds. Most of the machineries are shaped in a pod that has auto sanitation function and providing individual space as a strategic plan against the pandemic.



CLIENT
CIAT
 CIAT is a CGIAR research center focused on promoting agrobiodiversity and sustainable agroecosystems internationally. CIAT conducts crop research with its extensive genebank, also provides seed samples free of charge to any individual or organization for the purposes of research, breeding or training.

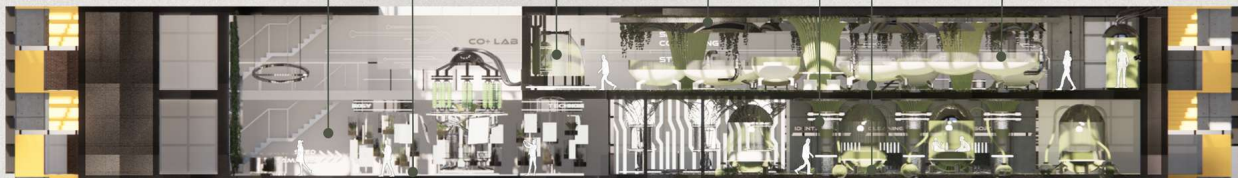




ELEVATIONS



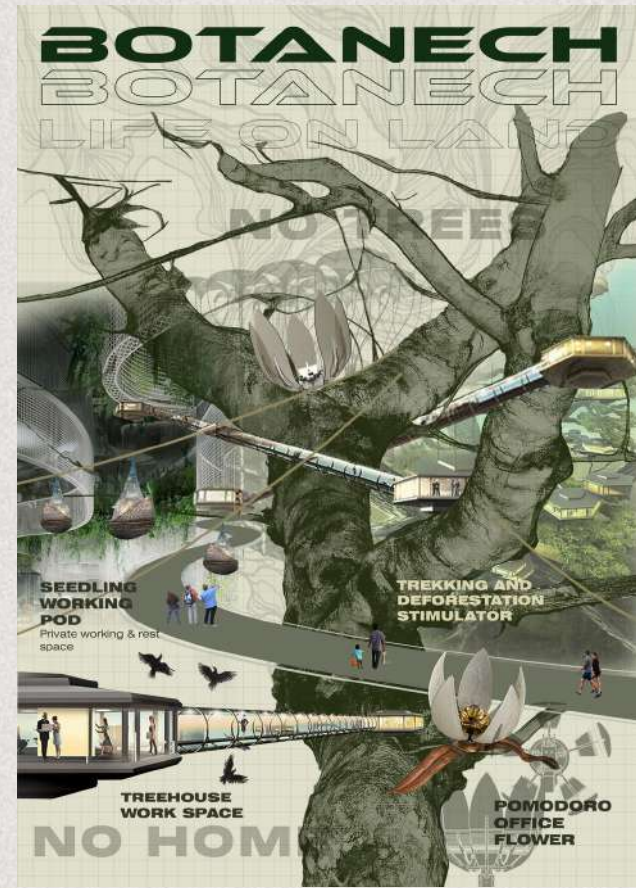
EL 02
ELEVATION 2
SCALE 1: 75



EL 01
ELEVATION 1
SCALE 1: 75



Ashley Tew Li Wen
(G5) 0343533



BOARD

DESIGN REVIEW DAY





DESIGN REVIEW DAY

WALKTHROUGH VIDEO

REFLECTION



Overall, this semester is the busiest and in some ways the toughest since we are getting ready to start our internships next semester, which requires our professors to push us to be the best and most professional.

As the assignments assigned by the professors keep flowing, I gained improved time management skills by completing this programme. The lecturers were polite and gave us a detailed timetable so we knew when to finish each task. This allowed me to arrange my time well and contribute to both my club and my classmates' personal projects at the same time. I've developed my ability to work quickly and responsibly.

To sum up, even though the semester was really challenging, I was still able to finish it successfully and learn new things, such as how to design sustainably, while also improving my communication and time-management skills and expanding my horizons throughout the semester.

